



# RIVA 86 DOMINO





## RIVA 86 DOMINO

Pure luxury from Riva

Officially registered under 24 meters, imagine yourself on board the Riva 86 Domino, caressed by the Mediterranean sun. This timelessly elegant Italian masterpiece invites you to enjoy an unforgettable nautical experience. Her sleek lines and iconic design make her a true object of desire for yachting enthusiasts.

Under the bonnet, two powerful MTU engines propel you to a breathtaking 34 knots, while inside, a luxurious showcase welcomes you.

Spacious and luxuriously appointed, the Riva 86 Domino offers all the comfort you need for extended cruising. Every detail and material has been carefully selected to provide you with the ultimate in comfort.

The main saloon is flooded with natural light thanks to large panoramic windows and offers breathtaking sea views.

The yacht has four luxurious staterooms, each with its own en-suite bathroom, ensuring maximum comfort on board. The well-equipped galley is perfect for preparing delicious meals, while the outside cockpit is ideal for al fresco dining or relaxing in the sun.



































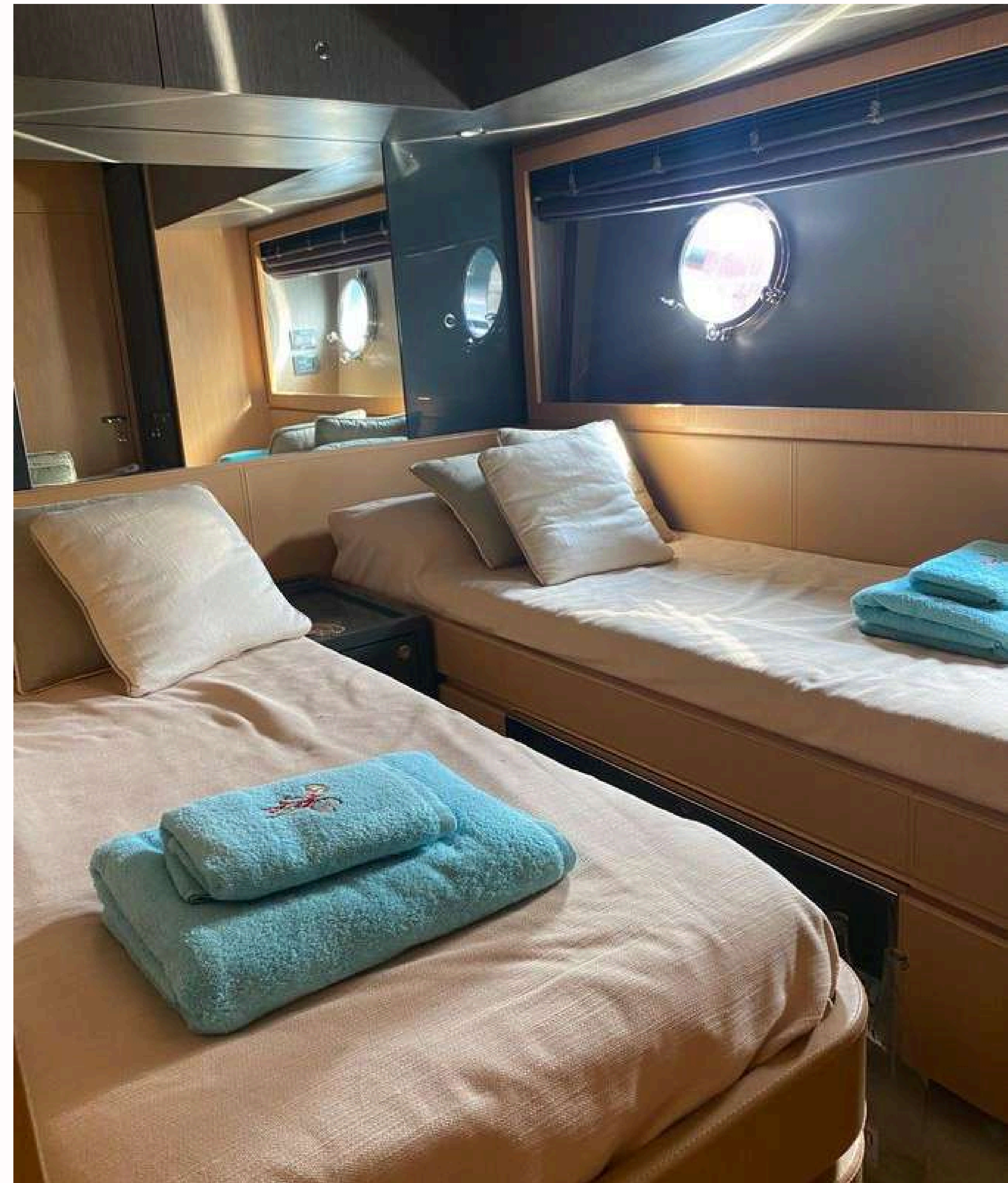




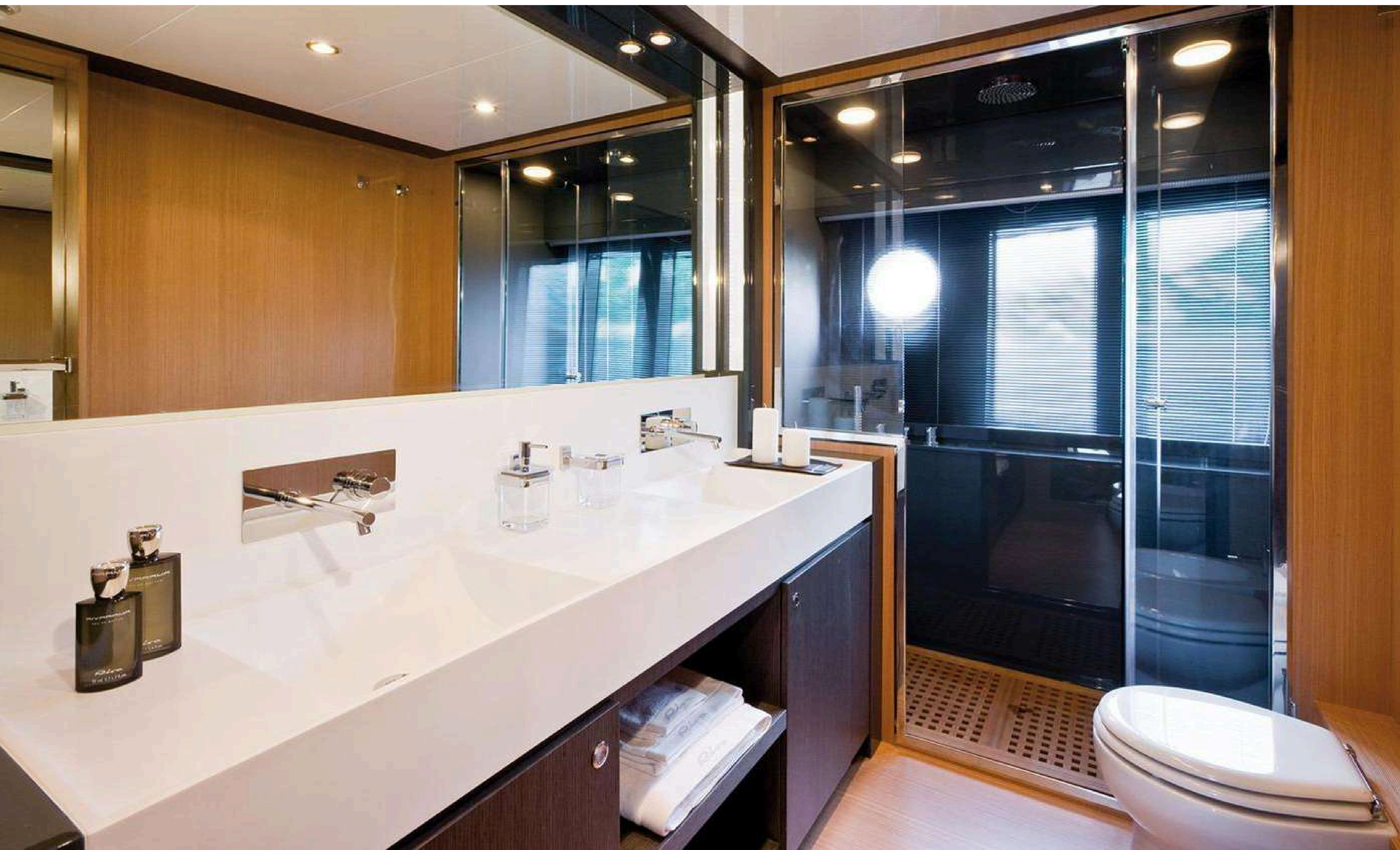














## SPECIFICATIONS

BUILDER : RIVA	YEAR: 2010
MODEL : 86 DOMINO	HULL/SUPERSTRURE MATERIAL : GRP
LENGTH : 26.39M	NAVIGATION CLASS : A
BEAM : 6.20M	GROSS TONNAGE : 94 GT
DRAFT : 1.55M	BOW/STERN TRUSTHERS : BOW AND STERN
ENGINES : 2 X MTU 16V M93 2435 HP	FUEL TANK CAPACITY : 7 500 L
CONSUMPTION : 450 L/H@ 32 KT OR 14 L/NM@ 32 KT	WATER TANK : 900 L
AUTONOMY : 533 NM @ 32 KT	BLACK WATER TANK : 500 L
GUESTS CABINS : 4	CRUISE SPEED : 32 KT
MAX GUESTS CAPACITY : 12	MAX SPEED : 38 KT
MAX GUESTS SLEEPING : 8	GENERATORS HOURS : PT 4 134 H STB 4 200 H

PRICE: 3 090 000 € VAT PAID



#### MECHANICAL

Engines: MTU 16V M93 2435 HP  
Year: 2010  
Serial numbers:  
Propulsion: SHAFT DRIVE

Fuel: DIESEL  
Propellers: 5 Blades  
Engine hours: 1175H

#### NAVIGATION EQUIPMENT

GPS: yes  
VHF: yes  
Flaps indicators: yes  
Flaps: yes  
Anchor: yes  
Plotter: yes

Compass: Electronic and magnetic  
Radar: yes  
Depth sounder: yes  
Autopilot: yes  
Speedmeter: yes

#### EQUIPMENT

Stabilisers: Mitsubishi Gyro  
Generator: 2 X Kohler 32 KW  
Watermaker: yes  
Inverter: yes

Motor batteries:  
Battery charger: yes  
Air conditioning: Tropical 180 000 BTU

#### DECK EQUIPMENT

Anchor Windlass: yes  
Mooring Winch: yes  
Sun Awning: yes  
Underwater light: yes

Bathing ladder: yes  
Deck shower: yes  
Gangway: yes

#### GALLEY AND LAUNDRY EQUIPMENT

Fridge: yes  
Freezer: yes  
dishwasher: yes  
Oven: yes  
Microwave oven: yes

Cook hob: yes  
Extra fridge: 1  
Extractor hood: yes  
Washing machine: yes  
Clothes dryer: yes

#### SAFETY EQUIPMENT

Life raft: yes  
Bilge pump: Automatic and manual





Aquila yachting  
29 Port Camille Rayon 06220 Golfe Juan FRANCE  
[www.aquilayachting.com](http://www.aquilayachting.com)

Contact: +33(0)6 34 04 67 33  
Mail: [alexandre.filonoff@aquilayachting.com](mailto:alexandre.filonoff@aquilayachting.com)

